



NEW

**Repair Kit
for critical
plug connections**

from page 2

123
Top deals

SOLUTIONS

NEWS + PROMOTION 01.10.2022 - 31.03.2023

MISSION: KLANN POSSIBLE

Time saving, safe, well thought out tools.

OPERATION BOARD

Made in Germany



TIME SAVING

These tools especially save time and thus real money.



SAFE WORK

With these tools, the focus is particularly on safety during use



ONLY FROM GEDORE

These tools are protected by us by patent, utility model, or design patent



MATERIAL-PROTECTING

These tools protect vehicle of spare parts from damage during removal and installation



COMMERCIAL VEHICLES

These tools are especially developed and suited for the use on commercial vehicles



TRANSPORTERS

These tools are especially developed and suited for the use on transporters



PASSENGER CARS

These tools are especially designed and suitable for use on passenger cars

KL-0080-SERIES

REPAIR KIT FOR CABLE/PLUG CONNECTIONS

Clean drives, reliable assistance systems and the goal of fully autonomous driving. What already seems technically solvable today develops immense challenges when it comes to repairs later in the workshop.

The progressive digitalisation of vehicle technology requires a complex electronics management system in which sensors, actuators and radio transmitters interconnected in a far-reaching wiring system. Today, a wiring harness consists of up to 8 km of cable, thousands of plug connections and various shielding systems.

In order to save weight, cables are becoming thinner and plug connections increasingly difficult.

The smallest changes in the cable cross-sections or the plug connections can cause serious faults. Therefore, a professional repair is essential, which with this kit provides in restoring the factory condition.

GEDORE KLANN EXPERIENCE stands for in-depth expertise in this specialist area of vehicle repairs. Resourcefull, time-saving, safe, professional.



NEW



Caution: System failure!

Oxidation or provisional repairs and plug connections not only result in time-consuming troubleshooting, but can also lead to serious faults in the vehicle system. Signals from sensors, actuation of actuators and the transmission of data on the CAN bus system can be massively disrupted. In the worst case, this can lead to delays of the failure of assistance systems!

The repair of FAKRA plug connections on e.g. GSM mobile radio, GPS and rear view camera systems has also been a challenge up to now. Here, too, the transmission of high-frequency signals can be considerably disturbed due to even slight oxidation on the plug connections or damaged shielding. Until now, the only solution was often a time-consuming and costly replacement of the entire FAKRA coaxial cable in the vehicle.

The newly developed repair kits of the **KL-0080 series** enable professional unlocking, stripping and controlled crimping of the most common cable/plug connections directly on the vehicle - quickly and professionally. The sets are supplied including matching socket and plug contacts. Thanks to the interchangeable CRIMP heads, the repair kit can also be easily extended in the future for many other plug connections.

NEW



**CRITICAL
PLUG CONNECTIONS
SAFE
REPAIR -
IN OEM QUALITY**

KL-0080-1 K

WIRING HARNESS REPAIR KIT
with consumables



Universal fit for common cable/plug connections on passenger cars, commercial vehicles, vans, buses, construction machinery, agricultural machinery, trailers and semi-trailers. Especially for cable/plug connections with and without single wire seal (ELA) such as MCP-2.8, JPT, MQS, DTM/DT-turned, SuperSeal-1.5 as well as for conventional crimp connections such as cable lugs, flat plugs, flat receptacles and butt connectors, etc.

UNLOCKING, STRIPPING and **CRIMPING**, everything ready to hand in a clearly arranged case system, developed for fast, organised and efficient repair work in the everyday workshop.

Defective, oxidised or provisionally repaired cable/plug connections can lead to serious system failures on the vehicle. For this purpose, the repair kit for professionals offers a comprehensive and robust assortment for quick and professional repair of almost all common cable/plug connections on the vehicle. Thanks to the unique and compact basic tool/interchangeable insert system, this can also be expanded as required in the future. The scope of delivery already includes a generous assortment of the most common contact and seals.

UNLOCKING: Unlocking tool with matching interchangeable inserts for damage-free release of a wide variety of cable/plug connections from the connector housing.

STRIPPING: Stripping tool with razor-sharp interchangeable inserts for precise stripping, especially for cables with extremely slippery PVC insulation.

CRIMPING: Crimping tool with interchangeable inserts for a perfect crimping result as ex works, guaranteed by the special cable/plug positioners. The tool can only be opened again when the pressure required for the crimping process has been fully applied.

28Ppcs + 1025 small parts

Code	No.	Unlocking inserts	Stripping inserts	Crimping inserts	Amount per contact
3429814	KL-0080-1 K	7 pcs	2 pairs	11 pcs	25 Piece

NEW

**AL
ONNECTIONS**

QUALITY!



KL-0080-11 K

REPAIR KIT

for FAKRA plug connection



Made in Germany

Universal fit for cars, commercial vehicles, and vans with FAKRA cable/plug connections (RTK031 and RG174). Installed, for example, on GSM mobile radio antennas, GPS antennas, and in rear-view camera systems.

For quick and professional stripping, crimping, and repairing FAKRA cable/plug connections. Time-consuming replacement of the entire FAKRA coaxial cable, usually across the vehicle, is not required! Defective, oxidised, or provisionally repaired FAKRA cable/plug connections can lead to system failures on GSM mobile radios, GPS systems, and rear view camera systems.



18pcs + 60 small parts

Code	No.	Cable diameter (RTK031)	Cable diameter (RG174)
3424634	KL-0080-11 K	3.2 mm	2.8 mm

Made in Germany



8156
CRIMPING PLIERS
for non-insulated contacts

- For non-insulated contacts with open crimp sleeve, such as flat plugs F2.8 F4.8 F6.3 and F9
- Easy handling
- Unlockable positive lock
- Hand-pleasantly shaped handles
- GEDORE special steel, burnished



Code	No.	Scope of application
2836831	8156	0.25-0.5 mm ² / 24-20 AWG - 0.5-1.0 mm ² / 20-18 AWG - 4.0-6.0 mm ² / 12-10 AWG - 1.5-2.5 mm ² / 16-14 AWG

Made in Germany



8155
CRIMPING PLIERS
for insulated connectors

- For red, blue and yellow insulated connectors, such as cable lugs, pin cable lugs, flat receptacles, round plug, circular sockets, butt connectors and parallel connector.
- Easy handling
- Unlockable positive lock
- Hand-pleasantly shaped handles
- GEDORE special steel, burnished



Code	No.	Scope of application
2836823	8155	0.5-1.0 mm ² / 20-18 AWG - 1.5-2.5 mm ² / 16-14 AWG - 4.0-6.0 mm ² / 12-10 AWG

Made in Germany



8097
WIRE STRIPPER, AUTOMATIC
0.2-6mm², 200mm

- With V-shaped cutting blade
- For stripping solid 0.2-6.0 mm² conductors
- Adjustable stripping length
- With wire cutters up to 2 mm



Code	No.	Length	Field of application
6702940	8097	200 mm	0.2 to 6 mm ²

Made in Germany



KL-0190-13
COMPACT UNLOCKING TOOL



Universally suitable for a wide range of cable connector systems.

- For professional and non-destructive unlocking of cable plugs
- Enables cable plugs to be unlocked from both sides (pulling or pushing)
- The cable connector can be unlocked even if the cable connector has broken off
- Very compact design



2 pcs

Code	No.	Length without extension	Length with extension
3408175	KL-0190-13	85 mm	345 mm

Made in Germany



KL-4600-3004
SELF-CLAMPING CAP
20 mm diameter, 85 mm long

NEW

- Universally used for hybrid and electric vehicles
- For easy covering and protection of live cable ends provides protection against accidental contact
- RED dip insulated
- IEC 60900 standard
- 1000V (double triangle) approval
- 10-way safety



Code	No.	Diameter	Length
3433145	KL-4600-3004	20 mm	85 mm

KL-4600-30..
ASSEMBLY TWEEZERS, INSULATED



KL-4600-3002



KL-4600-3003

- Universally used for hybrid and electric vehicles
- For safe working on the vehicle, provides protection against accidental contact with live parts
- RED dip insulated
- IEC 60900 standard

NEW

Code	No.	Variant	Length	Approval	Unit-tested
3433129	KL-4600-3002	bent	150 mm	1000V (double triangle)	10-way safety
3433137	KL-4600-3003	straight	145 mm	1000V (double triangle)	10-way safety



KL-4600-200

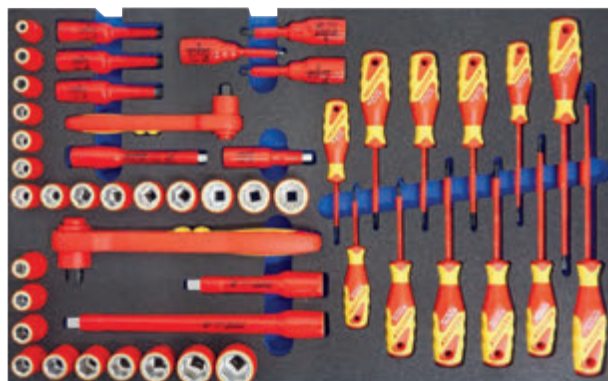
TOOL TROLLEY WITH HIGH-VOLTAGE ASSORTMENT (103 PARTS)

- The perfect tool kit for maintenance and repairs on hybrid and electric vehicles
- Suitable for vehicles of all manufacturers
- All tools are protective insulated to EN 60900 / EC 60900
- Tool trolley: Side panels with Euro perforations, externally mounted high-performance chassis, ball-bearing guide rails and central lock
- Including: digital voltage tester, 3/8" VDE torque spanner, safety lock, sockets, and ratchet, 3/8" and 1/2", and many more

Content:

- 3/8" VDE-tool assortment with SW 6 - 22; XZN M8 - M12
- 3/8" VDE torque spanner 5 - 25 Nm
- 1/2" VDE workshop assortment with SW 10 - 24; IN 5 - 8 mm;
- VDE single open-end spanner SW 9 - 24
- VDE single end ring spanner SW 8 - 22
- VDE slotted and cross-head screwdriver; TX T8 - T30
- VDE cable shear, VDE universal pliers, VDE power combination pliers, VDE power Diagonal cutter, VDE flat nose-round pliers, angled, VDE flat pliers, VDE cable stripping knife
- Meter connection fittings
- Digital voltage tester 1.000 V
- Electrician's protective gloves
- Undergloves
- Rubberised cloth cover 250 x 350 mm
- ISO insulation mat
- Barrier tape
- Warning sign "Flash"
- Warning sign high voltage "Switched ON", Warning sign "Switched OFF"
- Safety padlock
- Plastic clamp 80 mm; 160 mm
- Cable splitting wedge
- Rubber hammer

103 pcs 3/8" 1/2"



You can find our complete HV assortment in the new HV brochure.



Code	No.	Dimensions	Number of drawers	Load capacity (mobile/static)	Load capacity (per drawer)	Design
3415740	KL-4600-200	H 985 W 775 D 475 mm	6	650 kg / 900 kg	40 kg	3/8" + 1/2"

KL-0112-..

SOCKET SPANNER KIT, BRAKES



NEW

Suitable for brake calliper retaining bolts on common Audi, Porsche and Mercedes models.

- KL-0112-901 = Audi, Porsche, Mercedes
- KL-0112-902 = Audi S5
- KL-0112-911 = Audi Q7
- KL-0112-912 = Audi S8, Q7; Porsche Macan, Cayenne, Cayman
- KL-0112-913 = Audi S6, A8; Porsche Cayenne

Recommended accessories: 1993 U-20 - reversible ratchet



KL-0112-9

Code	No.	Spanner size:	Drive	Height	Number of teeth professional
3417492	KL-0112-9	11, 22, 14, 15, 20 mm	1/2"	50 mm	10, 7, 7, 10, 10
3245616	KL-0112-91	14, 15, 20 mm	1/2"	50 mm	7, 10, 10



KL-4021-310

KIT OF SCREWDRIVER BITS

3/8" with ball head

Universal fit for brake calliper fastening bolts.

- For easy removal and tightening of brake calliper fastening screws
- The special ball head enables work with angular offset
- For spots which are hard to reach

Suitability: **VW** **AUDI** **SEAT** **ŠKODA**
BMW **MERCEDES** **VOLVO** **PSA**
VAUXHALL/OPEL **RENAULT**



3pcs 3/8"

Code	No.	Spanner size	Drive	Length (each)
3405494	KL-4021-310	7 / 9 / 11 mm	3/8"	100 mm



KL-0114-55

UNIVERSAL BRAKE CALLIPER HOOK PAIR

(shapeable/flexible)

- Universally applicable.
- Two flexibly shapeable hooks with a robust surface coating
- For example they can be used for maintenance and repair work for easy and safe suspension of brake callipers, air-conditioning compressor, servo pump and much more
- Damage to hoses and cables from hanging down can be thus avoided



NEW

2pcs

Code	No.	Height
3417352	KL-0114-55	240 mm

400 10X11

BRAKE LINE SPANNER



Universal fit.

- For unscrewing and tightening the brake line screw connections.

Code	No.	Spanner size:	Profile	Ring angle	Overall length
6057270	400 10x11	10 / 11 mm	6-edge	15°	150 mm

KL-0140-29

BRAKE DISC CALLIPER GAUGE



Universal fit.

For quick measurement of the brake disc diameter, without removing the wheels.

Advantages:

- Quick identification of the brake system
- No wrong orders of brake pads or discs
- Reduction of returns
- Fast and efficient
- High time saving.



Code	No.	Span (measuring range)
2858614	KL-0140-29	50 - 400 mm

THREAD RESET

NEW

KIA CHEVROLET

JEEP HYUNDAI

LADA DAIHATSU

SUZUKI ISUZU

SUBARU HONDA

TOYOTA MAZDA

JAGUAR LEXUS

VOLVO RENAULT

ALFA PEUGEOT

FIAT CITROËN

VAUXHALL/OPEL

SMART CHRYSLER

NISSAN DODGE

INFINITI FORD

LAND ROVER

MITSUBISHI

VW-AUDI UVM.

SAFE, CHIPLESS REPAIR
NO WEAKENING OF THE THREAD
REPAIR IN ONLY 30 SECONDS
COMPLETE RESTORATION

KL-0173-612

RE-FORMING TOOL FOR WHEEL BOLT THREAD (M12x1,5)

Universally applicable on wheel studs and wheel bolts with M 12x1.5 thread, for passenger cars and vans.

- Fast and cost-saving reshaping of damaged threads on wheel studs and wheel bolts
- Thread is formed back to its original geometry (forming, pressing, stamping) back into its original geometry
- No material is removed in the process
- The strength of the wheel studs or wheel bolts is completely retained
- Thread is additionally compressed again
- Compact design
- Drive with a conventional hexagon socket with reversible ratchet
- Thread size covers approx. 80% of the approved vehicles with wheel studs!



NEW



before

Code	No.	Drive	Thread
3435628	KL-0173-612	Hexagon size 36	M12x1.5

KL-0173-601

RE-FORMING TOOL KIT FOR WHEEL BOLT THREAD (M12x1.25 + M14x1.5)

NEW

2 pcs



KL-0173-622

KL-0173-611

Universally applicable on wheel studs and wheel bolts with M 12x1.5 as well as M14x1.5 thread, for passenger cars and vans.

- Description see KL-0173-612



after

Code	No.	Drive	Thread
3435644	KL-0173-601	Hexagon size 36	M12x1.25 + M14x1.5

3550-UK-LS4

TORQUE SPANNER

TORCOFLEX UK kit 1/2"



Better readability
by magnifying effect



- Reliable torque spanner with a tightening range of 40-200 Nm with test certificate
- Controlled right-hand tightening; reversible ratchet with clockwise and anti-clockwise rotation; drive: 1/2"
- Classified to DIN EN ISO 6789-2:2017; Adjusted to a max. admissible deviation of +/-3 % and therefore more precise than +/-4 % required by the standard
- Through a 1/2" extension and power sockets with protective sleeve in sizes 17, 19, and 21 mm very suitable for changing wheels on passenger cars



5 pcs 1/2"



Code	No.	Type	Square drive inch	Square drive metric	Content	Height	Distance housing - square centre	Length	Head width	Head height	Weight
3107027	3550-UK-LS4	Ratchet with lever switch	1/2"	12.5 mm	Torque spanner TORCOFLEX 40 - 200 Nm no. 3550-20 UK Extension no. 1990-5 Power screwdriver kit 1/2", 3-part	44 mm	21.3 mm	499 mm	42.5 mm	22 mm	2.4 kg

TF-K300

TORQUE SPANNER TORCOFIX

TF-K



Sockets:

- Controlled screw tightening in the range of 60 - 300 N-m / 45 - 220 lbf-ft
- Adjustable, releasing, and robust pipe torque spanner with integrated ratchet with square drive for industry and trade



1/2"

Code	No.	Torque range	Scale division	Square drive	Return angle	Overall length
3278395	TF-K300	60 - 300 Nm	10 Nm	1/2"	7.5°	586 mm

TF-SE200

TORQUE SPANNER TORCOFIX

TF-SE



Sockets:

- Controlled screw tightening in the range of 40 - 200 N-m / 30 - 150 lbf-ft
- Adjustable, releasing, and robust pipe torque spanner with rectangular holder for industry and trade



Suitable plug tools can be found in the GEDORE tool catalogue "Compendium blue" on page 199.



Code	No.	Torque range	Scale division	Square insert	Overall length
3278549	TF-SE200	40 - 200 Nm	10 Nm	14 x 18 mm	479 mm

KL-0015 SP

SPRING COMPRESSOR, with protective inserts

Made in Germany



Suitable for suspension strut axle, including spring holder with protective inserts sizes 1N and 2N for spring diameter of 90 (inside) - 190 (outside) mm.

Advantages:

- Self-locking of the movable holder / lifting carriage
- Approved by the trade association
- Also usable for conical springs
- Protective plastic inserts



5pcs

Code	No.	Span	Operating stroke	Overall length	Drive	Max. load:	Breaking point
2480328	KL-0015 SP	Min. 50 mm / max. 345 mm	295 mm	475 mm	27 mm	17 500 N	70 000 N

KL-1502-SP

SPRING HOLDER PAIR, with protective inserts size OC

Made in Germany



Universal fit.

- Special spring holder pair in order to replace right-hand coil springs and shock absorbers on suspension systems of passenger vehicles.
- The anti-slip protective inserts prevent the spring from turning out and the sensitive spring surface coating from being damaged.



2pcs

Necessary accessories: KL-0015-100 - compressing cylinder (included in KL-0015 SP) or KL-2000-100 - compressing cylinder (included in KL-2000 SP)

Code	No.	Spring Ø from	Spring Ø to	Weight (pair):
2458942	KL-1502-SP	65 mm (inside)	115 mm (outside)	1.45 kg

KL-0029-200 K

REMOVAL AND MOUNTING AID FOR MCPHERSON SUSPENSION STRUTS

Made in Germany

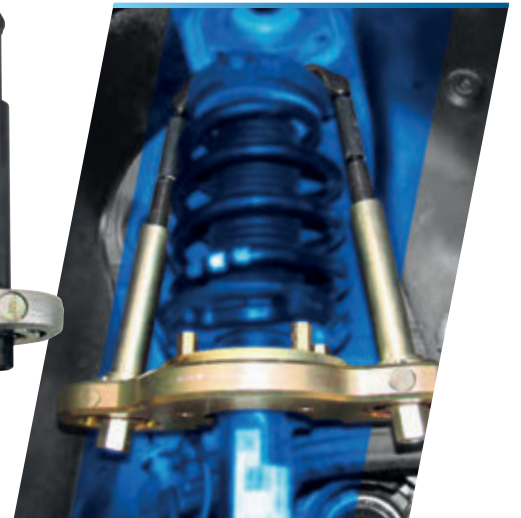


Suitable for McPherson suspension struts, in combination with the vehicle specific supplementary kits.

TIME, COST SAVING and EFFICIENT, simply HELPFUL!

- Unique special device for easy compression or reduction of the overall length of the strut
- Enables extremely fast removal and mounting of McPherson struts, especially on vehicle axles with strut clamping holes
- Extremely time and cost saving, as work such as loosening of axle parts and wheel alignment are no longer necessary
- Spring shape and pitch are completely irrelevant
- No direct contact with the spring
- Maximum user safety
- Simplest handling
- High load capacity
- 4-fold safety

NEW



Suitability: **VW** **AUDI** **SEAT** **ŠKODA**

Necessary accessories:
Vehicle-specific supplementary kits - KL-0029-1..

Code	No.	Load (max.)	Span *(min/max)	Clamping range	Drive for compression nut
3434419	KL-0029-200 K	17,500 N	250 - 410 mm	160 mm	27 mm

* = without support plate

KL-0029-110 A

SUPPLEMENTARY KIT VW-AUDI

Size 1, size 2, size 3

Made in Germany



7pcs

Fits VW-Audi, Seat, Škoda vehicles on MQB, PQ25, PQ35, and NSF platform.

- For easier removal of the suspension strut
- Only in combination with the spring preloading basic tool KL-0029-100 / -100 A

Suitability: **VW** **AUDI** **SEAT** **ŠKODA**

Code	No.	Content	Weight
3127850	KL-0029-110 A	1x KL-0029-111 - support plate, size 1; 1x KL-0029-120 A - supplementary kit, size 2; 1x KL-0029-130 A - supplementary kit, size 3	3.5 kg

UNIVERSALLY
FAST
EFFECTIVE
SAFE



KL-5501 B

SPRING COMPRESSOR stationary

Quick, easy, and effective compressing of almost any McPherson spring strut / shock absorber suspension leg available on the market, combined with maximum safety. As the strut is compressed between the upper plate/bearing and the bottom of the strut, spring shape or pitch do not influence the job at hand.

EASY ASSEMBLY

Assembly on the MODULO tool-/ assembly trolley - **KL-5501-120 A / -121 A** with the help of the fastening kit - **KL-5501-211**



Made in Germany



Universal fit for nearly all McPherson suspension struts on the market.

Fits particularly for right or left rising springs, conical springs, eccentric springs, springs with a low number of coils, springs with a high or varying spring pitch, spring struts with tension stop springs as well as for spring struts with electronic control and sensors.

- **UNIQUE, FAST and SECURE**, simply **BETTER!**
- Compresses even the strongest springs - E-MOBILITY-READY
- Damage-free security via the shock absorber tube
- Safe compressing directly via the strut bearing
- Spring shape and pitch completely irrelevant
- The Solution does not touch the spring
- Maximum user safety
- Simple handling
- One-man operation
- High load capacity
- 4-way safety



Application video

Code	No.	Drive	Breaking point	Max. load:	Weight	Max. span	Spring collar diameter
3230503	KL-5501 B	SW 24	60 000 N	15 000 N	46 kg	570 mm	125 - 220 mm

KL-0056-11 E

TOOL LOCKING KIT

In foam insert



Fits universally for McPherson suspension struts on passenger cars.

- For quick loosening and tightening of the the piston rod nut on McPherson suspension struts.

Advantages:

- Holder with 5/16" bit drive
- Holder with 1/4" socket drive
- Open 12 point sockets

Suitability: universally



17 pcs

Code	No.	Content
3401472	KL-0056-11 E	Socket, open SW 16-21 mm, holder for 5/16" bits and 1/4" sockets, Screwdriver bit SW 5-7 mm, T50, XZN12, 2-point socket, 6-8 mm, open-ended spanner with ring ratchet 19 mm, Ring open-ended spanner 10 mm, foam insert



KL-5501-1435 A ADAPTER RING

Fits spring struts with fork mount.

- Enables the safe reception of suspension struts with fork mounting on the lower support on the stationary spring compressor KL-5501 / KL-5501 B

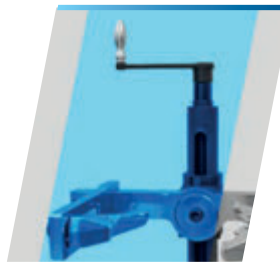
Suitability: universally, especially for:



Code	No.	Adapter diameter in mm	Thickness in mm
3406199	KL-5501-1435 A	57	20



KL-5501-40 HAND CRANK



- The hand crank enables a simple and fast drive of the stationary spring compressors KL-5501 and KL-5501 B when compressing and releasing a McPherson suspension strut

Code	No.	Drive	Length
3402444	KL-5501-40	Hexagon / 24 mm	195 mm

KL-0104-21 KB ADJUSTABLE SPREADING TOOL with wedges (Nos. 1 + 2 + 4 + 5)

Suitable for strut clamping holes and support joint mounts.

- Enables the professional widening of the strut clamping hole or the lower suspension joint mounting
- To pull out stuck shock absorber units or suspension joints without damaging them

Advantages:

- No canting of the spreading tool!
- No over-expansion of the strut clamping hole thanks to expansion wedges with stop!
- No damaging of the cast metal or aluminium steering knuckle housing!
- Off-centre camping slots are no problem!



6 pcs



Suitability: universally, especially for:



Code	No.	Spreading dimension
3269396	KL-0104-21 KB	Wedge 1: a=5.5 mm, b=12.0 mm / wedge 2: a=2.0 mm, b=8.0 mm / wedge 4: a=5.5 mm, b=9.5 mm / wedge 5: a=12.5 mm, b=17.0 mm

KL-0033-10 E Z

INTERNAL-TYPE SPRING COMPRESSOR, COMPACT with size 2A and 0A



Universal fit for chassis springs on transverse and trailing arm axles, for example on Audi A4 B8 (8K), A5 (8T), A6 (C7 / 4G), A7 (C7 / 4G), Q5 (8R); Mercedes-Benz E-Class (W211, W212), C-Class (W204), GLA (X156), GLK (X204); Ford Focus II (MK2); BMW 1 Series (E81); VW Passat (B8/3G).

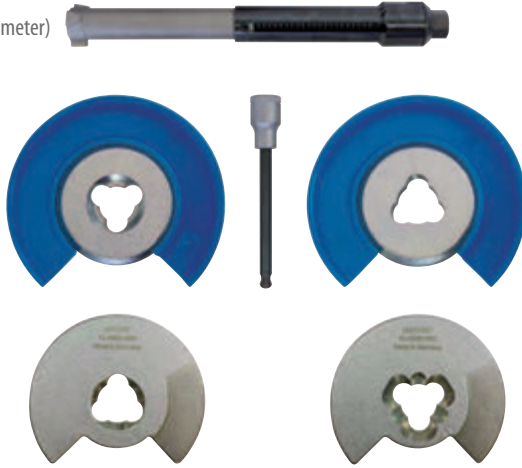
- Enables the quick and safe removal and installation of chassis springs
- For very small through holes (approx. 34 mm dia.) in the wishbone

Advantages:

- Very compact design (approx. 34 mm diameter)
- No wheel alignment necessary
- Very high time saving
- Very safe compressing due to 3-point safety locking
- No unscrewing of the spring

Recommended accessories:

KL-0033-300 E - Hold-down device kit with foam insert



Suitability: universally, especially for:



6 pcs

Code	No.	Max. load:	For spring diameter	Operating stroke	Span	Compressor cylinder diameter
3421198	KL-0033-10 E Z	30,000 N	80 mm (inside) to 130 mm (outside)	100 mm	116 - 216 mm	approx. 34 mm

KL-0033-300 E

HOLD-DOWN DEVICE TRANSVERSE AND TRAILING ARMS



Fits universally for chassis springs on wishbone and multi-link axles, for example on VW-Audi, Porsche, Mercedes, BMW, Ford, etc.

- Facilitates the disassembly and installation of chassis springs on wishbone and multi-link axles.
- The chassis remains spring-relieved
- Increases space for spring replacement

Suitability: universally, especially for:



5 pcs

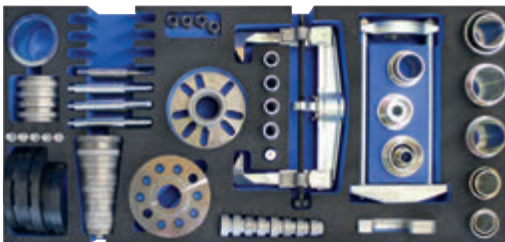
Code	No.	Drive	Diameter of support	Compression distance (adjusting nut, short)	Compression distance (adjusting nut, long)
3275205	KL-0033-300 E	SW 22	40/50 mm	80 - 113 mm	105 - 138 mm



MODULO ASSEMBLY TROLLEY

KL-4999-250

"MODULO 250" ASSEMBLY TROLLEY



The assembly trolley is the ideal, mobile workstation for fast, organised, and efficient repairs.

Content / range of application

- Various drive parts for operating the tool kits
- Removal and insertion of wheel bearings and hubs
- Removal and insertion of wheel bearing units
- Pulling of wishbones from the support joint clamping hole
- Removal of bonded and jammed joint shafts
- Various helpful hand tools

Required drive parts:

KL-0215-35 M25 - Hydraulic pump

Suitability: universally

127 pcs

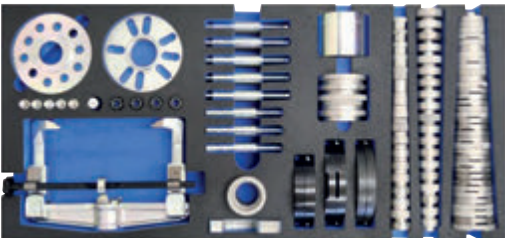
Code	No.	Load-carrying capacity (static / dynamic)	Load-carrying capacity of drawer
3413349	KL-4999-250	1,000 kg / 750 kg	70 kg



Your way to the flyer

KL-4999-260

"MODULO 260" ASSEMBLY TROLLEY



The assembly trolley is the ideal, mobile workstation for fast, organised, and efficient repairs.

Content / range of application:

- Various drive parts for operating the tool kits
- Removal and insertion of wheel bearing units
- Pulling of wishbones from the steering knuckle clamping hole
- Removal and insertion of wheel bearings and hubs
- Removal of bonded and jammed joint shafts
- Pulling and forcing into place of support/guide joints, silent blocks and joint bearings
- Pulling of stuck screwed wheel bearing units
- Also suitable for Subaru wheel bearings as well as Ford/Mazda/Volvo silent blocks rear axle
- The universal solution for nearly all repair work on axles
- Various helpful hand tools

Required drive parts: KL-0215-35 M25 - Hydraulic pump

Suitability: universally

189 pcs

Code	No.	Load-carrying capacity (static / dynamic)	Load-carrying capacity of drawer
3423468	KL-4999-260	1,000 kg / 750 kg	70 kg



Your way to the flyer



Universally applicable for repairs on wheel bearings, steering and axle systems on passenger cars and vans.



KL-4999-270

"MODULO 270" ASSEMBLY TROLLEY

The assembly trolley is the ideal, mobile workstation for fast, organised, and efficient repairs.

Content / range of application:

- Various drive parts for operating the tool kits
- Removal and insertion of wheel bearings and hubs
- Removal and insertion of wheel bearing units
- Pulling of wishbones from the steering knuckle clamping hole
- Removal of bonded and jammed joint shafts
- Pulling and forcing into place of support/guide joints, silent blocks and joint bearings
- Pulling of stuck screwed wheel bearing units

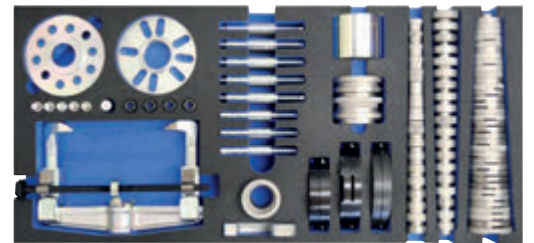
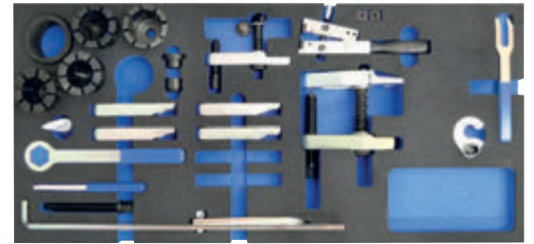


Your way to the flyer

- Counterholding of wheel hubs when loosening and tightening the wheel bearing central bolt
- Pulling of stuck wheel bearing inner rings from the wheel bearing
- Compressing of ear O-clips and locking of stepless hose clips
- Separating of ball joint connections of steering and axle systems
- Loosening and tightening of inner tie bar joints or axial joints
- Also suitable for Subaru wheel bearings as well as Ford/Mazda/Volvo silent blocks rear axle
- The universal solution for nearly all repair work on axles
- Also for dismounting inner ring bearings and separating ball joint connections for passenger cars and light commercial vehicles
- Various helpful hand tools

Required drive parts:
KL-0215-35 M25 - Hydraulic pump

Suitability: universally



213 pcs

Code	No.	Load-carrying capacity (static / dynamic)	Load-carrying capacity of drawer
3418340	KL-4999-270	1,000 kg / 750 kg	70 kg

KL-4999-1280

ATTACHMENT FOR WORKTOP for KL-4999-series / 1507 XL



Suitable for MODULO workshop trolleys KL-4999 series and 1507 XL.

Robust accessory for worktop made of extremely impact-resistant and oil-resistant ABS hard plastic. For easy attachment to the existing wooden worktop. 2x can shelves and 8x storage compartments for orderly storage of various small parts.

NEW

Code	No.	Plate inner dimension	Material	Weight
3428001	KL-4999-1280	1202 x 639 mm	Impact-resistant and oil-resistant ABS hard plastic	3.2 kg

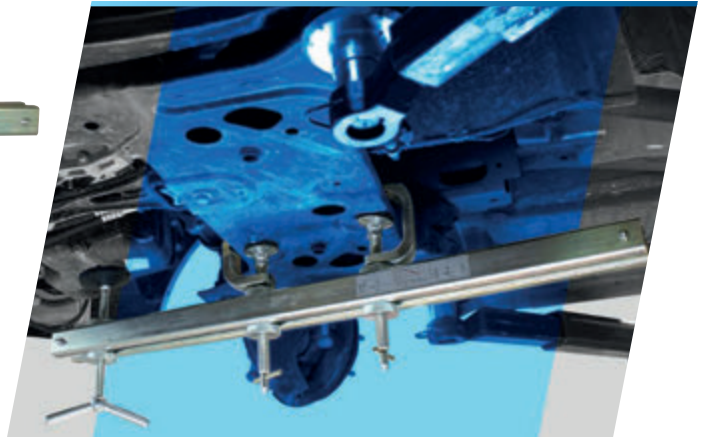
KL-0146-20

SUPPORT DEVICE ENGINE/GEARBOX

Made in Germany



Suitability: universally



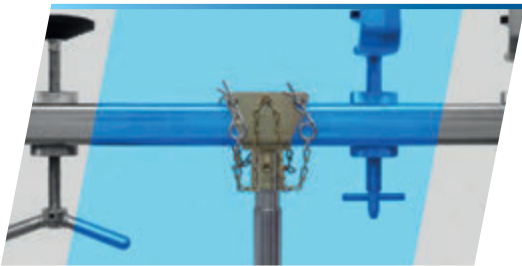
- Universally suitable for supporting engines of passenger cars
- For an easy and secure support of passenger car engines
- Large contact surfaces
- Can be individually adjusted
- Unique fixing of the support device at the vehicle frame
- Free access from top and bottom to the motor
- Anchor clamp rotates 360°

Code	No.	Overall length	Anchor clamp width in	Load (max.)	Height offset brackets in	Mounting diameter	Presentation thrust spindle in	Weight
2841576	KL-0146-20	1,100 mm	50 mm	100 - 300 kg	approx. 90 mm	100 mm	120 mm	16.5 kg

KL-0146-21

MOUNTING DEVICE

Made in Germany



- The mounting device **KL-0146-21** enables a safe grabbing of the support device **KL-0146-20** with a gearbox jack (punch diameter 30 mm)
- This facilitates the disassembly and assembly of the support device on the vehicle

Suitability: universally

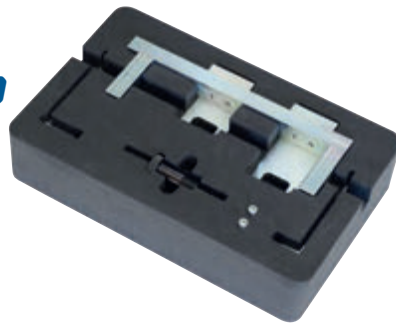
Code	No.	Mounting diameter in mm	Weight in kg
3020118	KL-0146-21	30	1.24

KL-0580-841 E

LOCKING TOOL KIT BMW/MINI (N13/N18)

with foam insert

Made in Germany



Fits BMW (N13) and MINI (N18) 1.6 petrol direct injection engines with turbocharging.

- For locking the camshafts and flywheel
- For pre-tensioning the timing chain tensioner

Suitability: **BMW** **MINI**

6 pcs

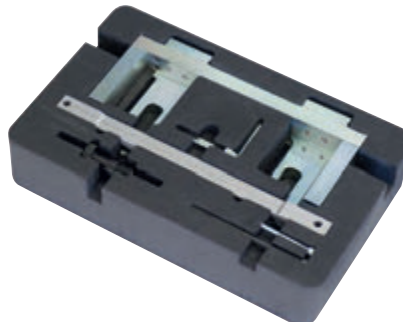
Code	No.	For engine type	Storage
3298787	KL-0580-841 E	Petrol	with foam insert

KL-0580-842 E

LOCKING TOOL FOR BMW (N20)

with foam insert

Made in Germany



Fits BMW (N20) 2.0 petrol direct injection engines with turbocharging.

- For locking the camshafts and flywheel
- Pre-tensioning the timing chain tensioner
- Checking the settings of the camshaft sensor wheels

Suitability: **BMW**

6 pcs

Code	No.	for engine type	Storage
3298930	KL-0580-842 E	Petrol	with foam insert

KL-0580-851 E

LOCKING TOOL FOR BMW (B38/B46/B48)

with foam insert



Made in Germany



Fits BMW and MINI (B38/B46/B48) 1.2, 1.5, 1.6, 2.0 petrol direct injection engines with turbocharging.

- For locking the camshafts and flywheel
- Pre-tensioning the timing chain tensioner
- Checking the settings of the camshaft sensor wheels

Suitability: **BMW** **MINI**

9pcs

Code	No.	For engine type	Storage
3298574	KL-0580-851 E	Petrol	with foam insert

KL-0580-230

SOCKET SPANNER FOR BMW injection pump shaft (N47)



Made in Germany



Fits BMW (N47) 1.6 and 2.0 diesel engines with Bosch CP4.1 high-pressure pump.

- For correct positioning of the high-pressure pump shaft when fitting the timing chain sprocket

Suitability: **BMW**

Code	No.	Length	Drive	Weight
3408566	KL-0580-230	41 mm	1/2"	250 g

KL-0680-30 K

LOCKING TOOL KIT FORD 1.0 ECOBOOST



Made in Germany



Fits with Ford 3-cylinder 1.0 EcoBoost petrol engines.

- For locking the camshafts, timing belts tensioner, crankshaft, and the flywheel
- For adjusting the camshaft phasers
- For pushing in the crankshaft seal ring

Suitability: **FORD**

18pcs

Code	No.	For engine type	Storage
3417425	KL-0680-30 K	Petrol	in case

KL-0183-80

VIBRATION DAMPER PULLER FORD



Made in Germany



Suitable for crankshaft vibration damper for Ford 1.5 EcoBoost and 2.0 EcoBlue motors.

- For easy pulling of the vibration damper
- Even very tight seized bearings are no problem

NEW

10pcs

Code	No.	For engine type	Clamping range	Weight
3429067	KL-0183-80	Petrol + Diesel	66 - 108 mm diameter	2.5 kg

KL-0284-172

ADAPTER KEY SIZE 13, 3/8"

Made in Germany



NEW



Suitable for timing belt tensioners on VW, Audi, Seat and Škoda with 1.0, 1.2 as well as 1.4 FSI/TSI/TFSI petrol engines.

- For loosening and controlled tightening of the hard to reach fastening screw of the timing belt tensioner
- Enables controlled tightening with a conventional 3/8" torque spanner

Code	No.	Spanner size:	Profile	Drive	Length
3293432	KL-0284-172	SW13 mm	Double SK	3/8"	215 mm

KL-0380-753 K

LOCKING TOOL KIT

for Mercedes 1.3

NEW



Suitable for Mercedes, Renault, Dacia and Nissan 1.3 petrol engines.

- For locking the camshafts, crankshaft, flywheel and timing chain tensioner

Code	No.	For engine type	Storage
3435717	KL-0380-753 K	Petrol	in case

KL-0482-703 K

LOCKING TOOL KIT

Opel 1.6 CDTi

NEW



Suitable for Opel 1.6 CDTi diesel engines.

- For locking the camshafts, crankshaft, and V-ribbed belt as well as timing chain tensioner
- For counterholding the crankshaft when loosening and tightening the crankshaft central bolts

Code	No.	For engine type	Storage
3435806	KL-0482-703 K	Diesel	in case

KL-0680-702 K

LOCKING TOOL KIT,

Ford 2.0 TDCi Ecoblue

NEW



Suitable for FORD 2.0 CDTi diesel engines.

- For locking the camshafts, flywheel, and timing chain tensioner
- For aligning the crankshaft
- For damage-free fitting of the timing belt on the camshafts

Code	No.	For engine type	Storage
3436063	KL-0680-702 K	Diesel	in case

KL-1280-704 K

LOCKING TOOL KIT,
Renault 1.6 dCi

NEW



Suitable for Renault, Fiat, Mercedes-Benz, Nissan, and Opel 1.6 (R9M) diesel motors.

- For locking the camshafts, crankshaft, V-ribbed belt and timing chain tensioner
- For counterholding the crankshaft
- For aligning the two-piece camshaft gearwheel

Code	No.	For engine type	Storage
3435911	KL-1280-704 K	Diesel	in case

KL-1280-7047

SOCKET SPANNER
8-edge for turbo exhaust housing

NEW



Suitable 8-edge special profile screws for Renault, Fiat, Mercedes-Benz, Nissan, and Opel 1.6 (R9M) diesel motors.

- For loosening and tightening the 8-edge special profile screws on the charge air pipe downstream of the turbocharger* and on the engine bonnet
- *Not requested for bi-turbo engines!

1/4"

Code	No.	Special profile	Spanner size	Length	Drive
3435814	KL-1280-7047	8-edge	10 mm	50 mm	1/4"

KL-1380-753 KB

LOCKING TOOL KIT FOR
PSA 1.0 + 1.2

4pcs



Fits Citroën, Peugeot, Opel 1.0 and 1.2 (3-cylinder) petrol engines.

- For locking the camshafts, crankshaft and V-ribbed belt tensioner
- Required when changing the timing belt or repairing the engine.

Recommended accessories:

KL-1380-7533 - Sealing ring mounting tool week

KL-1380-7535 - Counter-hold spanner crankshaft

Code	No.	For engine type	Storage
3292258	KL-1380-753 KB	Petrol	in case

KL-1380-7533

SEALING RING MOUNTING TOOL crankshaft

NEW

Fits Citroen, Opel, Peugeot and Toyota 1.0 + 1.2 (3-cylinder) petrol engines.

- For damage-free pressing in of the crankshaft sealing ring (toothed belt side)
- Required, for example, when changing the timing belt or repairing the engine

Recommended accessories:

KL-1380-753 KB - Locking tool kit for PSA 1.0 + 1.2

KL-1380-754 K - Locking tool kit PSA 1.2 GDI



Code	No.	For engine type
3436276	KL-1380-7533	Petrol

KL-1380-7535

COUNTER-HOLD SPANNER
Crankshaft

NEW

Fits Citroen, Opel, Peugeot and Toyota 1.0 + 1.2 (3-cylinder) petrol engines.

- For counterholding the crankshaft
- When loosening and tightening the crankshaft central bolt
- Accessories for KL-1380-753 KB and KL-1380-754 K



No.	For engine type
3435938	KL-1380-7535

KL-1380-754 K

LOCKING TOOL KIT FOR PSA 1.2 GDI

NEW



Fits Citroen, Opel and Peugeot 1.2 1.2 (3-cylinder) petrol engines.

- For checking the timing belt
- For locking the camshafts, crankshaft, V-ribbed belt tensioner or flywheel

Recommended accessories:

KL-1380-7533 - Sealing ring mounting tool week

KL-1380-7535 - Counter-hold spanner crankshaft

Code	No.	For engine type	Storage
3435997	KL-1380-754 K	Petrol	in case

KL-0186-14 KB

INJECTOR PULLER KIT

Universal, in plastic case

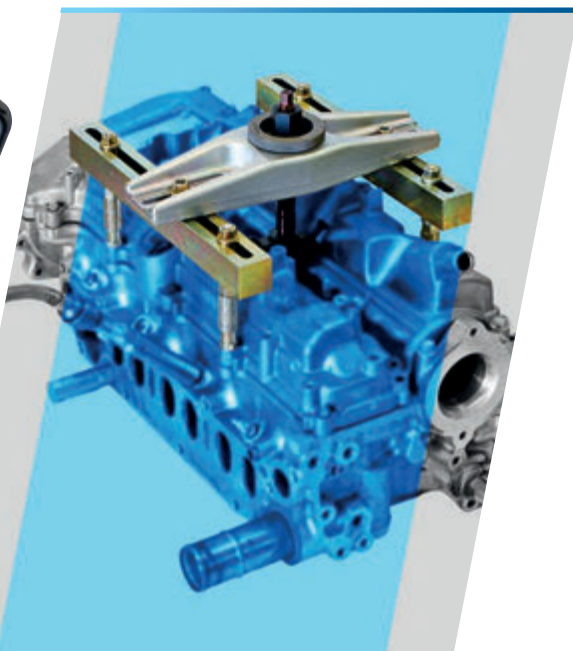
Universal fit for BOSCH and DELPHI injectors with M17x1 female thread and M14x1.5 male thread, for example, on PSA, Fiat, Mercedes, VW-Audi, Renault, Nissan, Vauxhall/Opel, Toyota, etc.

- For quick and powerful pulling of heavily stuck diesel injectors
- No removal of the cylinder head required
- Supplementary kits for engines and injectors available
- Can be operated hydraulically (accessories required)

Suitability: universally, especially for:



Made in Germany



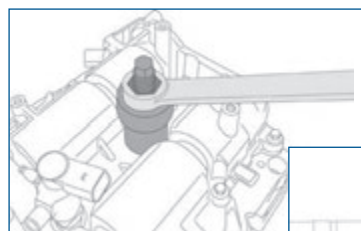
45 pcs

Code	No.	For female thread	For male thread	Engine type	Injectors
3420124	KL-0186-14 KB	M17x1	M14x1.5	Diesel	Bosch, Delphi

KL-0680-80 EA

INJECTOR EXTRACTOR FORD ECOBLUE 2.0

with foam insert



Made in Germany



Fits Ford 2.0 EcoBlue diesel engines.

- For quick and professional extraction of tight-fitting injectors directly on the vehicle
- No removal of the cylinder head required

Suitability: **FORD**

4 pcs

Code	No.	For engine type	Storage
3407039	KL-0680-80 EA	Diesel	with foam insert

KL-0186-1281 A

SUPPLEMENTARY KIT

Siemens injector M25x1



Made in Germany



Suitable for Siemens - injectors with an M25x1 female thread and a spanner size of 25 mm, e.g. for VW, Audi, Seat, Škoda 1.6 TDI. (CAYA, CAYB, CAYC, CAYD, CAYE, CLNA)

- Supplement for the injector extractor **KL-0186-14 KB**
- Depending on the engine, the specific support bolt kit **KL-0186-123.. / -124..** may be required

2 pcs 1/2"

Code	No.	For injectors	Drive	Spanner size:
3420132	KL-0186-1281 A	Siemens/VDO	1/2"	25 mm

KL-0186-1282 A

SUPPLEMENTARY KIT

Siemens injector M27x1



Made in Germany



Suitable for Siemens - injectors with a female thread M27x1 and a spanner size of 27 mm.

- Supplement for the injector extractor **KL-0186-14 KB**
- Depending on the engine, the specific support bolt kit **KL-0186-123.. / -124..** may be required

2 pcs 1/2"

Code	No.	For injectors	Drive	Spanner size:
3420140	KL-0186-1282 A	Siemens/VDO	1/2"	27 mm

KL-0186-1283 A

SUPPLEMENTARY KIT

Denso injector M16x1



Made in Germany



Suitable for Denso - injectors with a female thread M16x1 and a spanner size of 17 mm.

- Supplement for the injector extractor **KL-0186-14 KB**
- Depending on the engine, the specific support bolt kit **KL-0186-123.. / -124..** may be required

2 pcs 3/8"

Code	No.	For injectors	Drive	Spanner size:
3420159	KL-0186-1283 A	Denso	3/8"	17 mm

KL-0186-1284 A

SUPPLEMENTARY KIT

Denso injector M20x1



Made in Germany



Suitable for Denso - injectors with an M20x1 female thread and, additionally, M25x0.5 or M25x0.75 male threads and a spanner size of 27 mm.

- Supplement for the injector extractor **KL-0186-14 KB**
- Depending on the engine, the specific support bolt kit **KL-0186-123.. / -124..** may be required

5 pcs 1/2"

Code	No.	For injectors	Drive	Spanner size:
3420175	KL-0186-1284 A	Denso	1/2"	27 mm

KL-0186-1285 A

SUPPLEMENTARY KIT

Delphi / Bosch injectors (90° angle)

Made in Germany



2 pcs

Suitable for Delphi and Bosch - injectors with lateral fuel connection (90° angle to the injector).

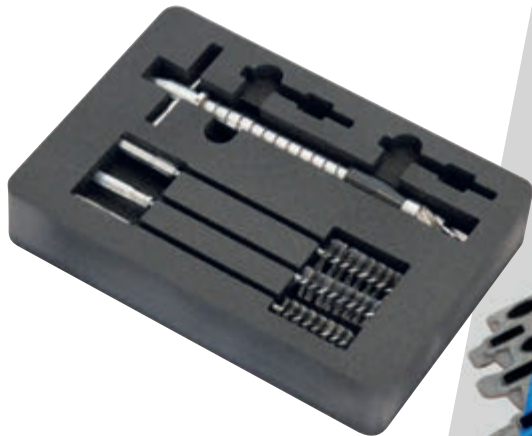
- Supplement for the injector extractor KL-0186-14 KB
- Depending on the engine, the specific support bolt kit KL-0186-123../-124.. may be required

Code	No.	For injectors	Weight
3420183	KL-0186-1285 A	Delphi and Bosch	600 g

KL-0186-54 E

CLEANING KIT FOR INJECTOR BORES

Made in Germany



Universal fit for Diesel engines.

- For cleaning of flat injector seats with a diameter of 17 mm
- Enables easy and quick cleaning of the injector bore
- in combination with a cordless drill, for example



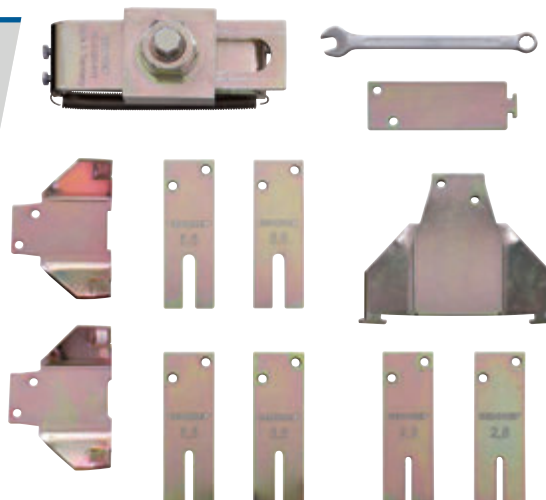
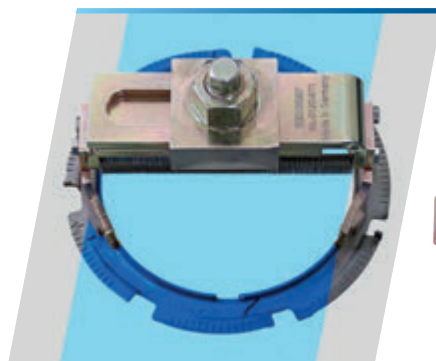
4 pcs

Code	No.	Injector bore brushes (length)	Injector bore brushes (diameter)	Cleaning tool (length)	Cleaning tool (diameter)
3415228	KL-0186-54 E	200 mm	18 / 19 / 24 mm	238 mm	7.3 / 17 mm

KL-0120-81 K

UNIVERSAL FUEL TANK SENSOR KEYSSET

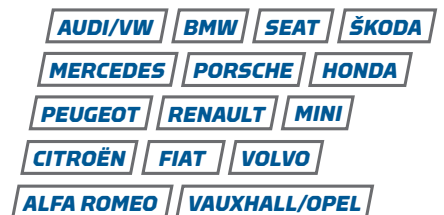
Made in Germany



Universally suitable for fuel sensor locking rings.

- Required for professional loosening and tightening of the fuel sensorlocking ring on the fuel tank.
- The fuel sensor key with lockable booms enables safe and damage-free mounting of all common fuel sensor locking rings.

Suitability: universally, especially for:



12 pcs

Code	No.	Adjustment range	Drive
3125580	KL-0120-81 K	110 - 180 mm	SW12 + SW24

KL-0132-14 K

THREAD REPAIR KIT FOR EXHAUST SENSOR

Universally suitable for NOx sensors, lamda sensors and injection units for soot/particle filter regeneration with M20x1.5 and M22x1.5 mounting threads.

- For quick re-cutting of coked or damaged mounting threads on the exhaust pipe
- Also for very confined spaces
- No need to remove the entire exhaust pipe
- Incl. open ring spanner for loosening and tightening the exhaust sensors and units

NEW

Made in Germany



5 pcs

Code	No.	Tap	Length of tap	Drive of tap	Double ring spanner
3430847	KL-0132-14 K	M20x1.25 + M22x1.5	45 mm	Size 13 mm	Size 22 +24b (open)

KL-0121-21 A

HOSE CLAMP PLIERS with remote control (semi-rigid)



Universal fit, for example on EGR coolers on VW-Audi.

- For safe opening and retaining of spring band hose clamps
- Thanks to the remote control, it is also suitable for spots which are hard to reach
- Semi-rigid construction allows shaping of the bowden cable
- With locking lever

Code	No.	Spring-loaded band clamp diameter	Length of bowden cable
3406350	KL-0121-21 A	18 - 53 mm	680 mm

KL-0130-3

DISMANTLING PLIERS for exhaust rubber

Universal fit.

- For quick and damage-free disassembly of exhaust rubbers
- Particularly sturdy design
- Easy handling



Code	No.	Length
3254437	KL-0130-3	300 mm

KL-0270-31 C

ALLEN KEY (REINFORCED)

with 8 inserts



9 pcs



Universal fit.

For professional adjustment of the track on the rear axle and for quick and easy loosening and tightening of the door hinge screws. Due to the special shape of the Allen key, it enables precise turning of screws that are difficult to access.

Code	No.	Bit inserts	Bit insert (height)	Bit drive	Length	Weight
2221594	KL-0270-31 C	T30, T40, T45, T50, T55, XZN-8, XZN-10, XZN-12	20 mm	5/16"	320 mm	500 g

8248-160 JC

ANGLED COMBINATION PLIERS

- For the toughest demands
- Combination pliers with 60° angled head
- For all wires, including piano wire
- Specially offset teeth in the gripping surfaces for best grip on pipes and screws
- Enables fatigue-free working over a longer period of time
- Optimum utilisation of hand force, forced posture of the hand is avoided



Code	No.	Length	Bracket length (L3)	Head width (W3)	Tip width (W4)	Head strength (T1)
2276585	8248-160 JC	165 mm	46 mm	24 mm	6 mm	10 mm

137 ...

LOCKING PLIERS 7"/ 10"



- With adjusting screw and release lever
- Automatically welded upper bracket - absolutely tight connection with the steel body
- Sophisticated bracket shape guarantees three-point contact with any material cross-section
- No widening under the heaviest load
- Release lever under constant pressure of a special spring

Code	No.	Length	Opening width / span	Weight
6406620	137 7	185 mm	25 mm	288 g
6406700	137 10	230 mm	32 mm	526 g

138 X

PIPE WELDING LOCKING PLIERS



- For clamping pipes and round material during welding works
- Cast steel brackets
- Nickel-plated
- Release lever blue dip-insulated

Code	No.	Length	Opening width / span	Weight
6407510	138 X	280 mm	10 - 90 mm	900 g

138 Y

PROFILE WELDING LOCKING PLIERS



- For clamping bulky profiles and angles
- Forged strong brackets
- GEDORE chrome-vanadium special steel, nickel-plated
- Release lever blue dip-insulated

Code	No.	Length	Opening width / span	Opening depth	Weight
6407860	138 Y	280 mm	95 mm	75 mm	700 g

600 E...

ROT BAND-PLUS METALWORKER'S HAMMER



Made in Germany



- Forged hammer head DIN 1041
- Double-curved hickory handle (600 H) Din 5111, with additional long, hardened steel handle sleeve
- Ring wedge, safety plate and wood screw make hammer head and wooden handle into one unit
- Patented handle fastening, high safety, long life, best price/performance ratio
- DBG M G 9414 1878, European patent no. 0703045

Code	No.	Length	Head weight
8582260	600 E-500	320 mm	500 g
8582420	600 E-800	350 mm	800 g

620 E-1000

FORGED HAMMER ROT BAND-PLUS



Made in Germany



- Forged hammer head DIN 6475
- Curved ash handle with additional long, hardened steel handle protective sleeve
- Sleeve, ring wedge, safety plate and wood screw make hammer head and wooden handle into one unit
- ROT BAND-PLUS handle fastening, high safety, long life, best price/performance ratio

Code	No.	Length	Head weight	Weight (total):
8886990	620 E-1000	360 mm	1 000 g	1 326 g

248 H-40

NON-REBOUND SOFT-FACE HAMMER,



Made in Germany



- With hickory handle
- Splinter-free, break- and wear-resistant polyamide heads, 75 Shore D, tested to -20°C
- Hammer finish silver powder coated

Code	No.	Length	Head weight	Diameter
8868580	248 H-40	360 mm	730 g	40 mm

119 L

PIN PUNCH KIT, long form, 6 pcs

- Vanadium steel
- Uniformly trough-hardened over the entire length and carefully tempered
- Impact heads inductively tempered
- Working ends bright ground and clear lacquered
- In PVC holder



6 pcs

Code	No.	Length	Diameter
8866290	119 L	175 mm	4 / 10 mm diameter

113

DRIFT PUNCH KIT WITH CENTRE PUNCH, short form, 6 pcs

- Vanadium steel
- Uniformly trough-hardened over the entire length and carefully tempered
- Impact heads inductively tempered
- Working ends bright ground and clear lacquered
- In PVC holder



6 pcs

Code	No.	Length	Diameter (tip)
8753680	113	120 mm	1 / 5 mm diameter

7-08

COMBINATION SPANNER KIT

- In a practical compilation
- Design according to DIN 3113 shape A, ISO 3318, ISO 7738
- With the same spanner sizes
- Ring side 15° angled, with hollow shaft
- GEDORE vanadium steel 31CrV3, chromed



8 pcs

Code	No.	Spanner size:	Design
6092770	7-08	Size 10/12/13/14/17/19/22/24	UD-profile

1993 TU-10

TELESCOPIC REVERSIBLE RATCHET 1/2"



- Long lever arm for high torque, max. 600 N-m
- Adjustable from 400 to 600 mm in eight positions
- With lowered shift lever
- With push-button release
- Ratchet lock in centre position. When shifting, the shift lever automatically engages for right or left gear
- For hand-operated sockets and connecting parts with square drive according to DIN 3120 - C 12.5, ISO 1174, with ball locking device
- GEDORE vanadium steel 31CrV3, chromed
- Annealing fogged in the casting

1/2"



Code	No.	Torque (max.)	Return angle	Handle
3041859	1993 TU-10	600 Nm	7.5 degrees	Non-slip 2-component handle

1990 M / 3090 M

EXTENSION WITH MAGNETIC HOLDER



- For hand-operated sockets with through holes and square drive according to DIN 3210, ISO 1174, with ball locking device
- The holding magnet fixes the screws or nuts in the socket so that they cannot be lost
- One-handed operation - the screw or nut can be screwed in immediately with the socket
- Strong permanent magnet holds even large screws firmly in place
- Particularly suitable for work in confined spaces
- Vanadium steel 31CrV3, chromed



Code	No.	Drive	Length	Square drive nominal size
2697920	1990 M	1/2"	83 mm	12.5 mm
2960060	3090 M	3/8"	60 mm	12.5 mm

KL-4043-100

SOCKET SPANNER KIT IP TORXPLUS®



Universal fit for vehicles with TorxPlus® screw connections.

- For unscrewing and tightening TorxPlus® screw connections with internal profile.
- Used, for example, on or timing belts and on timing chain case covers as well as on motors and gearboxes in general

11 pcs 1/4" 3/8"

Suitability: **VW** **AUDI** **SEAT** **ŠKODA** **RENAULT** **NISSAN** **VAUXHALL/OPEL** **TOYOTA** **FIAT** **GM** **FORD**

Code	No.	Spanner size:	Profile	Drive
3292002	KL-4043-100	IP 10; 15; 20; 25; 30; 40; 45; 50; 55; 60	IP TX-Plus®	1/4" + 3/8"

KL-4043-200

SOCKET SPANNER KIT 3/8", EP TORXPLUS®



Universal fit for vehicles with TorxPlus® screw connections.

- For unscrewing and tightening TorxPlus® screw connections with external profile.
- Used, for example, on or timing belts and on timing chain case covers as well as on motors and gearboxes in general

7 pcs 3/8"

Suitability: **VW** **AUDI** **SEAT** **ŠKODA** **RENAULT** **NISSAN** **VAUXHALL/OPEL** **TOYOTA** **FIAT** **GM** **FORD**

Code	No.	Spanner size:	Profile	Drive
3292118	KL-4043-200	EP 10; 12; 14; 16; 18; 20	EP TX-Plus®	3/8"

KL-4043-300

SOCKET SPANNER SET 1/2", EP TX-PLUS®



Universal fit for vehicles with TorxPlus® screw connections.

- For unscrewing and tightening screw connections with external profile.
- Used, for example, on axle parts, flywheel, and on engine and gearbox in general

7 pcs 1/2"

Suitability: **VW** **AUDI** **SEAT** **ŠKODA** **RENAULT** **NISSAN** **VAUXHALL/OPEL** **TOYOTA** **FIAT** **GM** **FORD**

Code	No.	Spanner size:	Profile	Drive
3292207	KL-4043-300	EP 22 / 24 / 26 / 28 / 30 / 32	EP TX-Plus®	1/2"

KL-4043-400

SOCKET SPANNER SET 1/4", EP TX-PLUS®



Universal fit for vehicles with TorxPlus® screw connections.

- For unscrewing and tightening screw connections with external profile.
- Used, for example, on timing belt and timing covers, control units, etc.

7 pcs 1/4"

Suitability: **VW** **AUDI** **SEAT** **ŠKODA** **RENAULT** **NISSAN** **VAUXHALL/OPEL** **TOYOTA** **FIAT** **GM** **FORD**

Code	No.	Spanner size:	Profile	Drive
3409112	KL-4043-400	EP 6 / 7 / 8 / 10 / 11 / 12	EP TX-Plus®	1/4"

920...

MECHANIC AND ASSEMBLY GLOVES FASTFIT

Made in Germany



- For universal use
- Optimal fit preserves the sense of touch and greatest possible finger mobility
- Classification according to EN 420/03 in level 5 (rating from 0-5)
- Hand-friendly
- Durable artificial leather and synthetic material

2 pcs

Code	No.	Size	Material
1938576	920 8	Size 8/S	Durable artificial leather and synthetic material
1938584	920 9	Size 9/M	Durable artificial leather and synthetic material
1938592	920 10	Size 10/L	Durable artificial leather and synthetic material
1938606	920 11	Size 11/XL	Durable artificial leather and synthetic material
1938614	920 12	Size 12/XXL	Durable artificial leather and synthetic material

906

KNEEBOARD

Made in Germany



- Made of firm foam, blue/black
- With recessed grip

Code	No.	Length	Width	Height	Weight
1942948	906	450 mm	210 mm	30 mm	110 g

KL-4901-10

UNIVERSAL COMBINATION SCISSORS

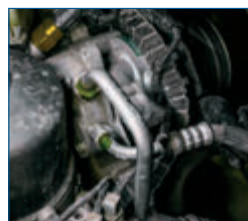


- Highly resistant cutting edges made of stainless steel, for perfect cutting performance along the entire length of the cutting edge.
- One cutting edge serrated with cable cutter
- Handy, impact-resistant plastic handles with closer and self-opening spring

Code	No.	Blade length	Overall length
2473844	KL-4901-10	40 mm	180 mm

900 20

LI-MH LED LAMP USB CHARGING PORT



- Versatile LED/UV lamp with a slim design
- Infinitely dimmable, switchable from LED light to UV light blue-violet
- For finding leaks, for example in air conditioning systems, heat pumps, etc.
- Hooks can be folded out on both sides, powerful magnet on the 45° adjustable base
- Powerful mini magnet at the peak for collecting small parts
- Can be charged by the supplied power pack or a USB port

3 pcs

Code	No.	Length	Brightness	Lamp power	Battery
3108678	900 20	477 mm	620 lumen	16 W	3.350 mAh

KLM-0101

EXPERIENCE T-SHIRT

- Stretch jersey (190 g/m²): 95% cotton / 5% Elasthane
- Oeko-Tex® Standard 100
- Manufactured under fair working conditions
- Applications on chest and arm



Code	No.	Size
3418758	KLM-0101-S	S
3419355	KLM-0101-M	M
3419363	KLM-0101-L	L
3419371	KLM-0101-XL	XL
3419398	KLM-0101-XXL	XXL

KLM-0202

MKP LONGSLEEVE

- 100% Organic cotton (220 g/m²)
- Manufactured under fair working conditions
- Applications on chest, back, and arm



Code	No.	Size
3419401	KLM-0202-S	S
3419428	KLM-0202-M	M
3419436	KLM-0202-L	L
3419444	KLM-0202-XL	XL
3419452	KLM-0202-XXL	XXL

KLM-0402

MPK SOFTSHELL WAISTCOAT

- Breathable with permanently water-repellent coating
- Windproof three-layer membrane fabric
- Zipped pockets, adjustable elasticated hem
- Manufactured under fair working conditions
- Application on the front



Code	No.	Size
3419517	KLM-0402-S	S
3419533	KLM-0402-M	M
3419541	KLM-0402-L	L
3419576	KLM-0402-XL	XL
3419584	KLM-0402-XXL	XXL



THE PROFESSIONAL ALL INCLUSIVE PACKAGE!

KL-4998-400

WORKSHOP TROLLEY Passenger car hand tools



NEW

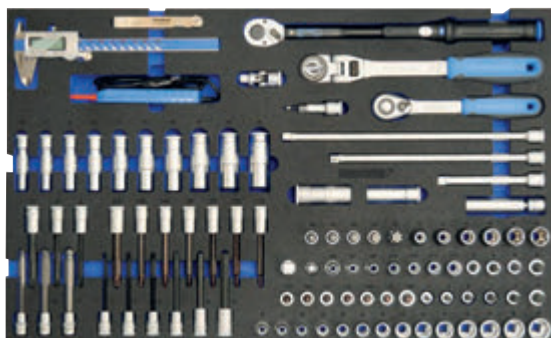
Universally applicable for maintenance and repair work on cars and vans.

- Very extensive and extremely robust hand tool assortment
- Ideal, mobile workplace
- Metric design
- 8 fully stocked drawers
- One empty drawer at the bottom
- Broad drawers with full-extension runners
- Safety locking for each drawer



Drawer 1 (1/4" assortment + pliers assortment)

- **1/4" assortment:** Ratchet bit screwdriver, insert holder, bit box (32 pcs), bit adapter, reversible ratchet, cross-handle, cross-handle ratchet, cardan joint, extensions (55+ 97 + 148 + 305 mm), sockets 12-edge size 4-13 mm / hexagonal size 4-13 mm (long) / TX T10-40 / TX E4-10 / TX PLUS IP10-30 / TX PLUS EP6-12 / cross-head screwdriver PH1-3 / slot 5.5-6.5 / inner hexagon IN3-8)
- **Pliers assortment:** Kraft combination pliers, diagonal cutter, multiple pliers, flat-nose round pliers, universal pliers, circlip pliers kit (4 pcs)
- Offset screwdriver kit (TX T9-40 / hexagonal with ball head size 2-10 mm)
- Grip spanner brake line (11 mm)
- Steel tape measure (5 m)
- Magnetic lifter



Drawer 2 (3/8" assortment)

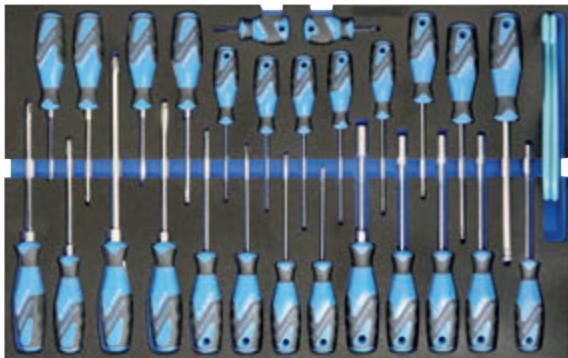
- **3/8" assortment:** Reversible ratchet, articulated reversible ratchet, cardan joint, extensions (125 + 250 + 305 mm), extension with holding magnet, adapter (to 1/2 + to 1/4"), sockets hexagonal size 6-19 / 12-edge size 10-19 (long) / TX T20-50 (short + long) / TX E6-14 / internal hexagon IN4-10 (short + long) / internal hexagon with ball head IN7-11 (long) / XZN M5-10 (short + long) / TX PLUS IP40-60 / TX PLUS EP 10-20), spark plug socket (size 14 + 16 + 18)
- Voltage tester (6-48 Volt AC/DC)
- Torque spanner (3/8", 10-50 Nm)
- Digital caliper
- Feeler gauges



Drawer 3 (1/2" assortment)

- **1/2" assortment:** Reversible ratchet, telescopic reversible ratchet, cross-handle, cardan joint, extensions (125 + 250 mm), extensions with holding magnet, adapter (to 3/8"), sockets hexagonal size 8-32 / TX T27-60 / TX E10-24 / internal hexagon IN5-17 / XZN M5-16 / TX PLUS EP22-32
- Torque spanner (1/4", 40-200 Nm)





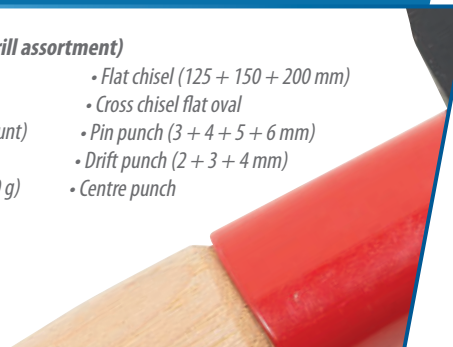
Drawer 4 (screwdriver assortment)

- screwdriver assortment hexagonal size 6-10; internal hexagon IN3-8 (with ball head); Cross-head screwdriver PH1-4 (with impact cap); cross-head screwdriver (short); slot 4.5-8 (with impact cap); slot 5.5 (short); TX T10-40
- Universal brake calliper hook pair



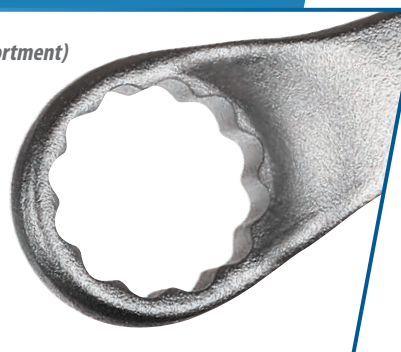
Drawer 5 (striking tool, file, drill assortment)

- Gasket scraper
- Workshop file (10" / round + half-round + flat blunt)
- Brake calliper file
- Metalworker's hammer (400 + 1500 g)
- Soft-faced hammer
- Twist drill kit (1 - 13mm / 25 pcs)
- Pry bar (300 + 390 mm)
- Flat chisel (125 + 150 + 200 mm)
- Cross chisel flat oval
- Pin punch (3 + 4 + 5 + 6 mm)
- Drift punch (2 + 3 + 4 mm)
- Centre punch



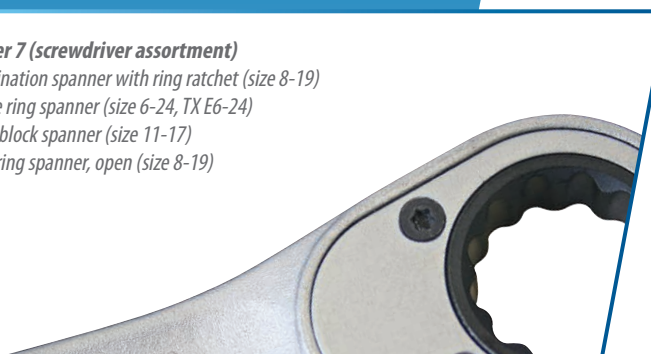
Drawer 6 (combination spanner assortment)

- Special locking pliers
- Brake calliper brush
- Combination spanner assortment (size 6-32)



Drawer 7 (screwdriver assortment)

- combination spanner with ring ratchet (size 8-19)
- Double ring spanner (size 6-24, TX E6-24)
- Starter block spanner (size 11-17)
- Double ring spanner, open (size 8-19)



Drawer 8 (1/2" assortment long)

- Sockets hexagonal size 10-32 (long); internal hexagon IN6-14 (long); TX T27-60 (long)
- Power spanner socket with protective sleeve (size 17-22)
- Power spanner socket (size 13-27)
- Cable cutter
- Universal combination scissors



412 pcs

Code	No.	Number of drawers	Dimensions drawer	Load-carrying capacity of drawers	Dimensions carriage	Total load carrying capacity (static/mobile)
3421147	KL-4998-400	9 (bottom one empty)	B 640 x T 400 mm	40 kg (bottom one 60kg)	H 812 x W 771 x D 478 mm	1,000 kg / 750 kg

KL-0167-30 A

Made in Germany



ECCENTRIC SPANNER

for fast removal and installation of axial joints

NEW



automechanika
FRANKFURT

Innovationaward 2022
Nominee



- Fits universally for passenger cars and vans
- For a quick removal and installation of internal track rod joint or axial joints with a diameter of 30 to 43 mm

Advantages:

- High time saving
- Without removal of the steering gear
- Unique open construction
- Resistant profiling reliably prevents slipping of the tool
- Direct mounting on the tie rod
- Drive via 1/2" square drive

Suitability: universally, especially for:



Code	No.	Drive	For diameter (min.) mm	For diameter (max.) mm
3427900	KL-0167-30 A	1/2"	30	43

Your dealer/stamp:

pronax group, s.r.o.

www.pronaxnaradie.sk

pronaxnaradie@gmail.com

A. Popluhár +421 905 483 509

Revolučná 17, 821 04 Bratislava

sídlo: Nádražná 34

900 28 Ivanka pri Dunaji



GEDORE
KLANN EXPERIENCE

SOLUTIONS NEWS + PROMOTION valid
from 01.10.2022 till 31.03.2023.
Only while stocks last.

Delivery without decoration. Subject to technical changes.
All information and prices are subject to typographical and printing errors.

GEDORE Automotive GmbH

Breslauer Straße 41 | 78166 Donaueschingen | GERMANY

Tel +49 771 83223-0 | Fax +49 771 83223-90 | info.gam@gedore.com

gedore-automotive.com